

OFFICIAL BROCHURE

MANAGING MADE SIMPLE

The ERP software that helps you
take full control of your business



**SAFER IN
THE CLOUD**



**INTERACTIVE
DASHBOARD**



**FULL SAAS
MODEL**



**ANYWHERE.
ANYTIME.**

WHO WE ARE

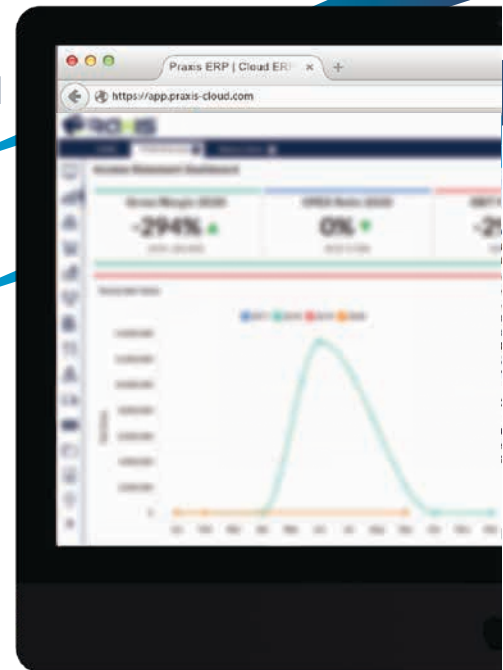
CSS Providers, a sister company of JHI Haddad, is a regional service provider established in January 2008 that provides scalable business solutions to its customers, enabling them to fully integrate and automate their business processes.

Our Mission rely on a robust Information Technology platform, Fuzion, that enables innovation, high productivity and rapid time to market.

A PLATFORM FOR **GROWTH**

THE ERP

Praxis ERP is the end-to-end business solution that is proposed in Cloud (SaaS), On-Premise and Hybrid deployments. Its modular, flexible, scalable and adaptive business architecture makes it the best choice for enterprises of all sizes, industries and geographies.



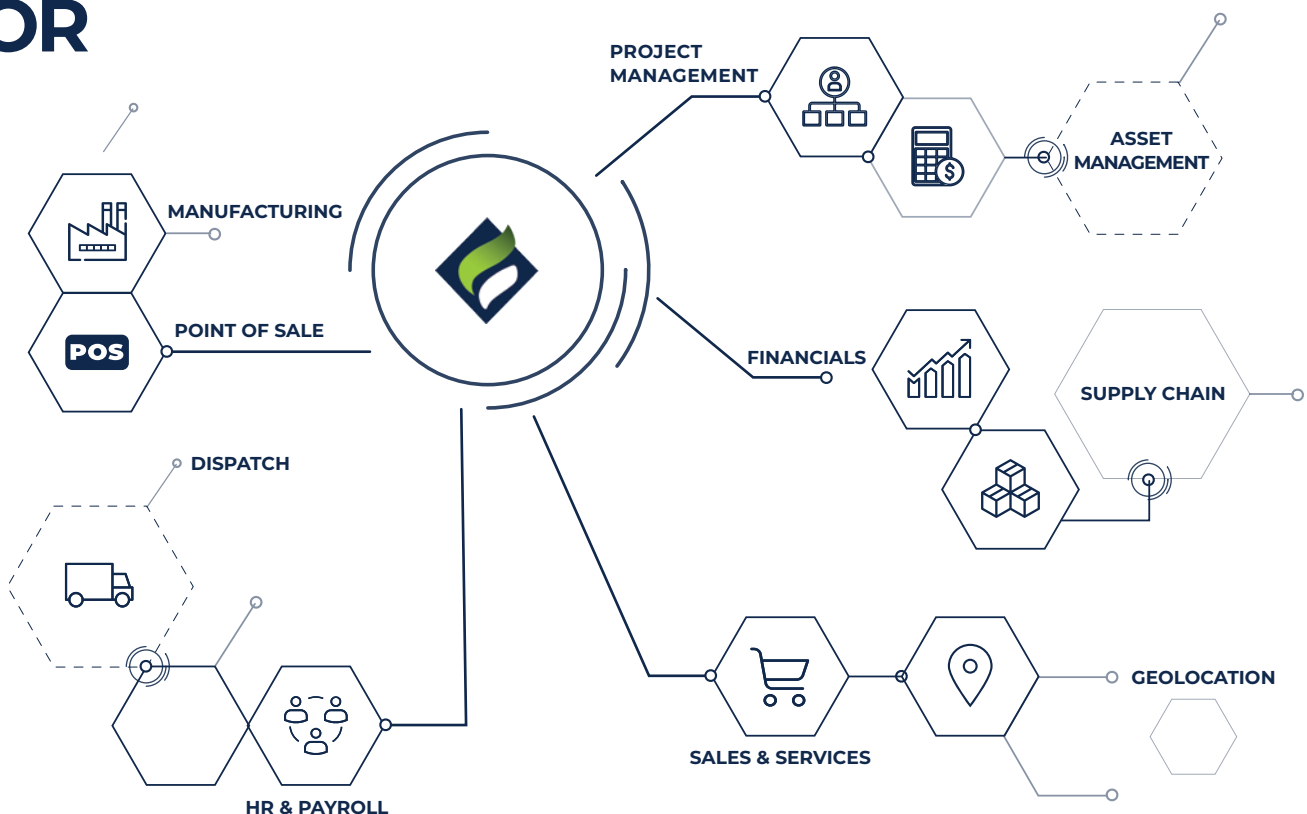
In addition, its broad localization capability facilitates global operations management across multiple geographies and complex structures. Praxis ERP also enables businesses seamlessly operate in a centralized or decentralized manners, hence adapting to each customer's unique business requirements, workflows and operating model, while optimizing productivity and business processes.



Fuzion Platform is the Java-based technology platform on which the Praxis ERP modules are built as Web-services. Fuzion offers by-design security, flexibility and scalability to each of the modules, while enabling deployments on any device, OS and Database. Fuzion also enables easy creation of modern and customized user interfaces and offers tremendous search capability that provide a great user experience.

THE ALL IN ONE YOU'RE LOOKING FOR

STARTING \$5/MO.



LEADING CLOUD HOST PARTNER



LATEST CLOUD TECHNOLOGY

Hosted on **AWS** data center servers, you can access your account, data and information anywhere, on any device.

Automatic security updates, automated backups and enterprise-level security, mean you can be certain your data is safe.



A HASSLE-FREE SOLUTION

TEN REASONS WHY



**FUNCTIONAL &
EASY TO USE
INTERFACE**



**LOCAL &
INTERNATIONAL
LAWS COMPLIANT**



**GREATER STABILITY
& CONTINUOUS
UPDATES**



**INDUSTRY-
SPECIFIC
SOFTWARE**



**FULLY DEDICATED
SUPPORT TEAM**



**ADVANCED
SEARCH
ENGINE**



**MULTI COMPANY
& BRANCH
MANAGEMENT**



**ADVANCED
ANALYTICS
TOOL**



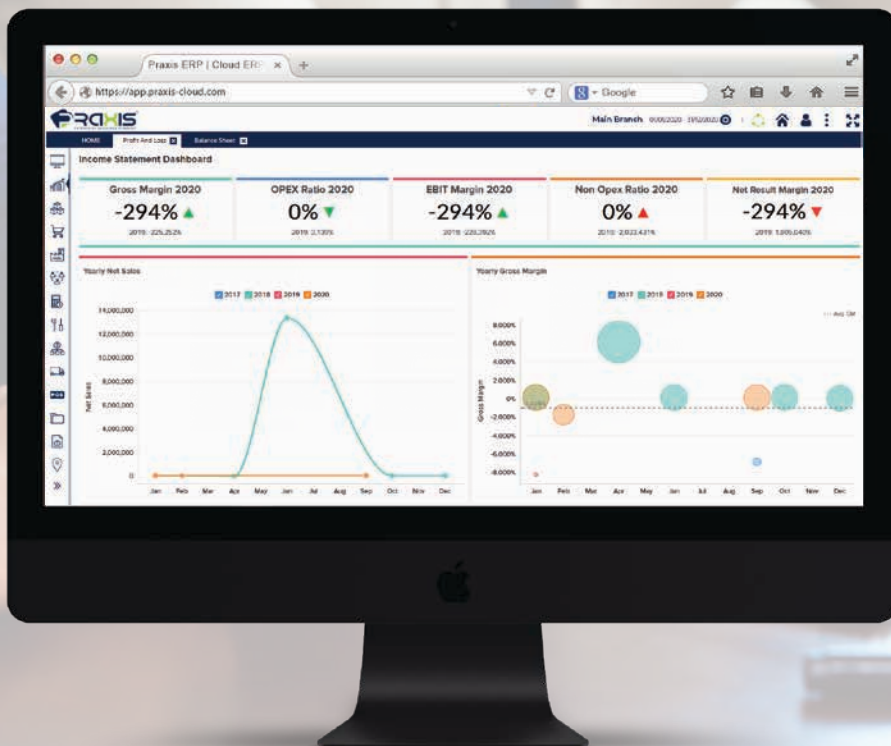
**STAND
AHEAD OF YOUR
COMPETITION**

**PARTNERSHIP
PROGRAM**

**WORLD CLASS
PARTNERSHIP
ECOSYSTEM**

FINANCIALS

The Financials module is operative for every company requiring a Cloud-based accounting system. It has the ability to systematize every transaction made within the business and its advanced reporting tools provide immediate visibility on your cash flow, profit & loss as well as the balance sheet.



MANAGE FINANCES



TRACK MONEY FLOWING



MONITOR & REPORT

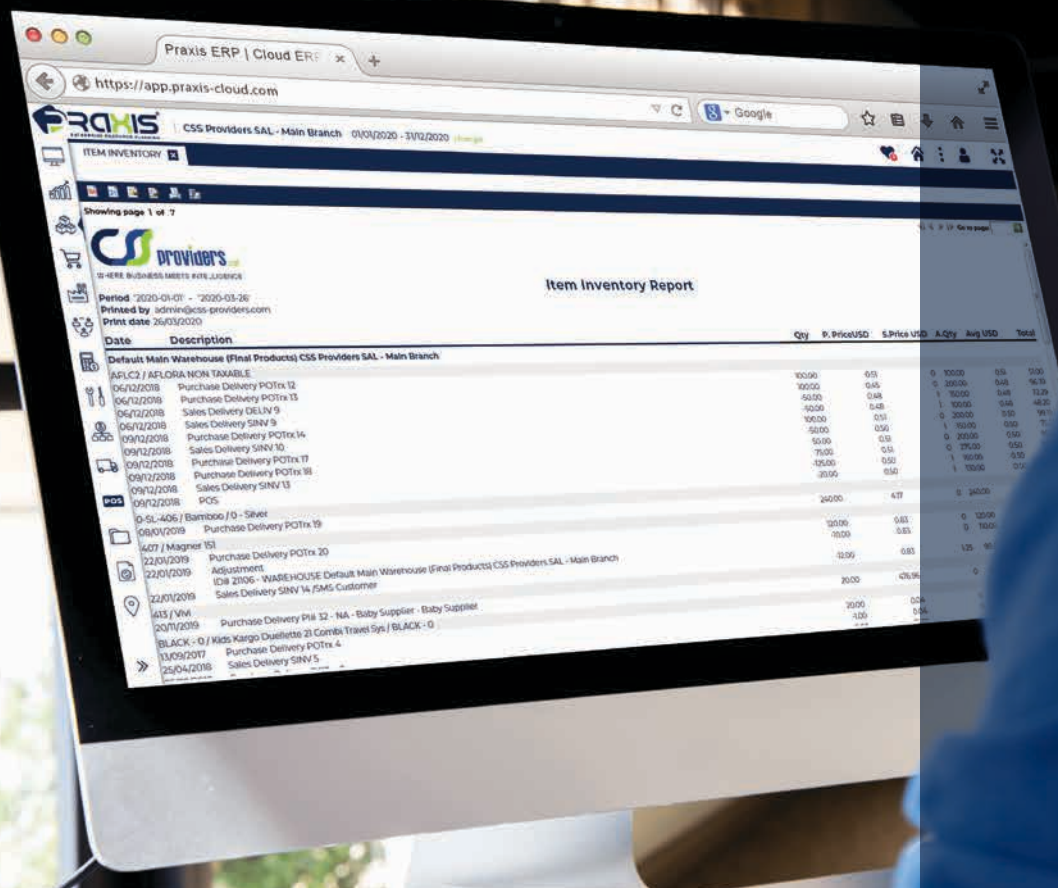
Key Features

- Tailor your general ledger to fit your unique business requirements.
- Easily track and manage your cash inflows and outflows and stay up-to-date on your accounts in real-time.
- Keep payments well-organized so you know where you stand with suppliers.
- Easily know what's coming in, outstanding bills, and how much you've spent so far.
- Streamline tax management and stay compliant with local and international accounting standards.
- Auto Closing the books, automate manual tasks, accelerates financial close process.
- Access real-time insights from charts and graphs, compare year-over-year income and expenses, and evaluate where you can reduce expenses, grow revenue, and increase profit with the dynamic analytical dashboard.



SUPPLY CHAIN

Our Supply Chain module is designed to drive superior performance in day-to-day procurement operations enabling access to real-time information that will help business owners better manage costs and maximize profitability. Praxis ERP is also characterized by its all-in-one multi-warehouse inventory solution providing you with advanced tools to effectively control and monitor your stock and warehouses.



PROCUREMENT WORKFLOW



SUPPLIER MANAGEMENT



COMPARISON TOOL

Key Features

**Take Charge
& Stay In Control**

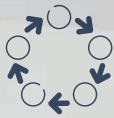
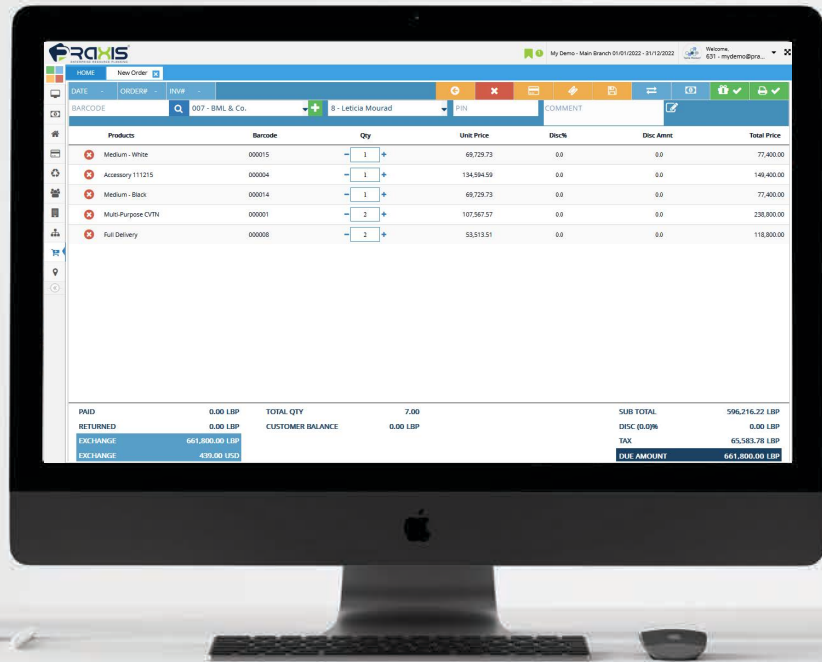
- Define your product's unique characteristics including units of measure, main supplier, unit cost (FIFO, LIFO, average..) and selling price and configure thousands of product attributes and variants with no restrictions (e.g. colors, shapes, and lengths)
- Make your supply chain more efficient than ever by monitoring stock levels and sell through to avoid overstock or out-of-stock situations.
- Take full control of your procurement, purchase intelligently, and stock up goods exactly as you need.
- Maximize profitability by updating cost of goods to include the direct and indirect costs.
- Total traceability and track every stock move in your supply chain, from purchase to warehouse to sales. Keep key information at your fingertips and make smart purchasing decisions.



SALES & SERVICES

The Sales module is powerfully designed for minimum input and maximum output, simplifying complex sales procedures and processes to increase efficiency. In addition, it allows the Executives to track their sales teams on different products, services, locations, and customers. With its comprehensive features, the module centralizes all customer information and interactions and gives robust real-time reporting.

**What Gets Measured,
Gets IMPROVED!**



SALES CYCLE



PRICE OPTIMIZATION



POINT OF SALE

Key Features

- Manage the entire sales flow effortlessly. From custom sales requests, quotations, and orders to automatic invoicing, delivery, and returns.
- Set your pricing strategy by defining the standard price list, adding specific discounts based on customer or product types, and managing promotions and offers to maximize revenue.
- Track your sales team across different products, locations, and customers. Automate your commission calculation, live location tracker, route management, and many more.
- Accelerate the credit-to-cash cycle and gain central control over your credit and collections using critical real-time information such as customer balances, outstanding invoices and receivables aging.
- Our Point-of-Sale Solution equips you with a full range of standard transactions such as order creation, returns and exchange, gift cards, and coupons; in addition to the ability to easily access updated customer information, inventory availability, historical transactions, and loyalty programs all from a single source.



MANUFACTURING

The Production Management System assists companies in streamlining and visualizing the full production process to convert its raw materials into finished goods. Praxis ERP grants companies real-time access to every detail throughout the production phases, which in turn, enhances the decision-making process for continued growth and profitability.



Key Features

- Create your default manufacturing sets using the needed raw materials, add/modify quantities, replace ingredients, and store mixed units of measure in order to produce the final product.
- Take full control of your daily production and maximize production performance.
- Track and trace all production activities with transparent traceability across batch/job numbers, product manufacturing sets, and periods.
- Auto create production job for product sold from the point of sales.
- Track all costs of manufactured product including material, labor, equipment, and other resources giving you detailed analysis and reporting tools to help you identify the true operation cost and profit and continuously detect cost-reduction opportunities.
- Efficiently track all raw materials used during manufacturing processes while giving you access to crucial information for greater transparency and traceability.

PAYROLL

Our Payroll application surfaces valuable analytics to deliver great employee experience and make time for the strategic HR activities that make a real difference to your business and employees. Furthermore, the module manages a business human capital by collecting and calculating the total net amounts to be paid for the employees in function to their working hours, basic salary, transportation, overtime, taxes, deductions, etc.



ABSENCE MANAGEMENT



TIME & ATTENDANCE



MULTI PROFILES & CALENDARS



An application designed to optimize

Key Features

the entire employee payment process

- Manage your employee database and record in a centralized hub. Upload historical data, and store essential documents related to your workforce with the ability to instantly access and view data as needed.
- Monitor employee total hours worked based on clock-ins and outs and compare them against a predefined working calendar. Easily configure shifts as per your requirements in terms of default working days, shifts, schedule margins, and overtime among other things.
- Customize paid-time offs, vacation, and sick leave policies and get accurate time-off reports with just a few clicks — all while managing requests and keeping track of leave and sick balances at your fingertips!
- Simplifies and accelerates the way you do your payroll through flexible pay structures that can be tailored to every job function. Customize payslip printouts, send email notifications, and issue payments with a click.
- Automatically calculate taxes owed and paid per employee to meet all legal requirements and stay confident that your organization operates with enhanced compliance while keeping up with all regulatory changes.



ASSET MANAGEMENT

This module is purpose-built to help you in managing all types of assets to maximize reliability and performance.




STREAMLINED ASSET LIFECYCLE



REAL-TIME MONITORING



FINANCIAL TRACKING



**Gain full control over your assets
and enhance your operational efficiency.**

Key Features

- Creates, classifies, and describes the complete list of assets. You can record all details related to every asset including vendor details, date of purchase, cost, ID, location, user, etc.
- Acquire your assets easier using Praxis ERP where you get to handle all transactions from asset requests, quotations, and orders to invoicing and delivery.
- Assigns your organization's assets to locations, departments, and users to gain complete visibility and traceability at a glance.
- Handles multiple depreciation methods and is fully integrated with the general ledger. You get to visualize depreciations by cost center, control all aspects of depreciation by defining the depreciation rate, percentage, and acceleration as required.
- Handles the entire asset lifecycle from purchase to being depreciated and sold or disposed of. Whether the asset no longer fits your business needs, has become too expensive to maintain, or can no longer be used anymore, Praxis ERP allows you to go through the sales disposal or waste disposal process, depending on its condition.

MANAGE WITH ABSOLUTE CERTAINTY

Praxis ERP has been shaped specifically for all companies and individuals no matter their business type, size or location.



Data Encryption & Security

Our high level of encryption and security gives you extreme confidence as a Cloud user, to protect your data and operate without almost any risk



Freemium-based Solution Pricing

The cost is based on how you need to use the software and finding the solution that meets your needs, at a cost that matches your budget



Stress-free Implementation

With the latest technologies integrated within Praxis ERP, the implementation phase is easier than ever, ensuring a smooth data and information transition



Tailored Training

We offer several types of training: online, at your premises or at ours; all of which are presented to fulfil your needs and get you fully ready to use the software



Quality Assurance

We take pride in the quality of our services and provide our clients consistent meticulous and second-to-none customer service



LET'S MAKE YOU READY

See the software in action!

Our software is trusted by leading local and multinational companies because they believe that Praxis ERP is a tool for business advancements, in addition to simplifying daily managerial and operational processes, thus ensuring sustainability in diverse work environments.

Book your free demo or begin your 14-day trial and get access to hundreds of tools and features providing your business smarter yet unlimited tools for growth.

REQUEST A DEMO

BEGIN FREE TRIAL

For further information, visit:
www.praxis-cloud.com



GET
TO KNOW
US



WHERE BUSINESS MEETS INTELLIGENCE

FIND OUT MORE

Dora Gate Center, Beirut - Lebanon
+961 1 251 008 | +961 1 257 598/9

© 2020. All Rights Reserved.

